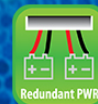


# 3ISYS-ETHF-5C

**INDUSTRIAL 5-PORT MINI TYPE UNMANAGED  
ETHERNET SWITCH WITH 5X10/100BASE-T(X)**

## FEATURES

- Complies with IEEE 802.3 10Base-T, IEEE 802.3u 100Base-TX Ethernet standards
- Supports auto negotiation and 10/100Mbps half / full duplex mode
- High performance Store and Forward architecture, broadcast storm control, runt / CRC filtering eliminates erroneous packets to optimize the network bandwidth
- Prevents packet loss with back pressure (half-duplex) and IEEE 802.3x pause frame flow control (full-duplex)
- Backplane (Switching Fabric): 1Gbps
- Integrated address look-up engine, supports 2K absolute MAC addresses
- Automatic address learning and address aging
- CSMA / CD Protocol
- IP-30 metal casing
- DIN rail and wall mount design
- 12 to 48V DC, redundant power with polarity reverse protect function and connective removable terminal block for master and slave power
- Supports EFT protection 6000 VDC for power line
- Supports 6000 VDC Ethernet ESD protection
- -40 to 75 degrees C operating temperature
- Free fall, shock, vibration industrial stability



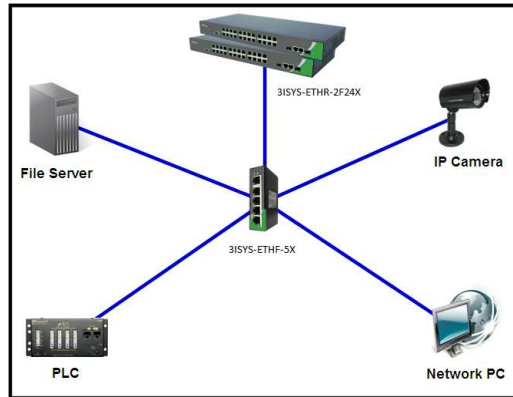
© 2014 3ISYS NETWORKS INC ALL RIGHTS RESERVED. THIS DOCUMENT IS 3ISYS PUBLIC INFORMATION ALL SPECIFICATIONS ARE SUBJECT TO CHANGE WITHOUT FURTHER NOTICE. ALL FEATURES WITH \* MARK WILL BE AVAILABLE BY FIRMWARE UPGRADE.

## **PRODUCT OVERVIEW**

3ISYS-ETHF-5C is unmanaged Ethernet switch with 5x10/100Base-T(X) ports. 3ISYS has released the advanced industrial hardened Fast Ethernet Switch series with slim type, IP-30 metal case. The compact, IP-30 standard metal case allows either DIN rail or wall mounting for efficient use of cabinet space. The 3ISYS-ETHF-5C, one of the new models, is equipped with 5 10/100Mbps auto negotiation ports and operates reliably in heavy industrial demanding environments.

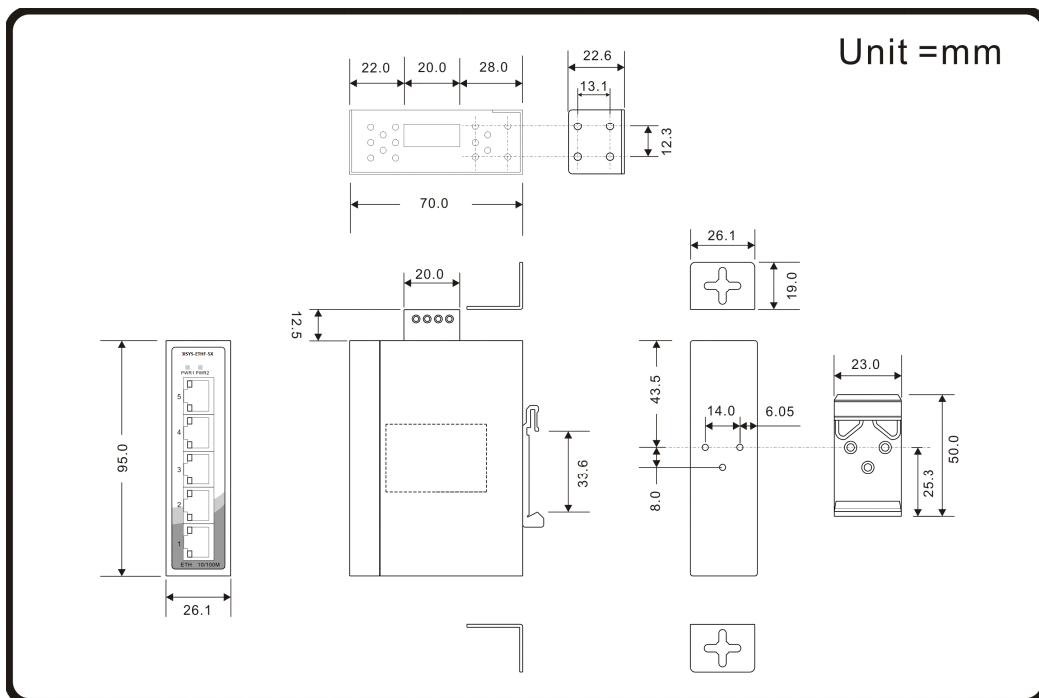
## IMPLEMENTATION

3ISYS-ETHF-5C can be used in connecting host of Ethernet devices like Ethernet I/O, IP-Camera or other Ethernet switches. It can perform wire-speed packets transfer without risk of packet loss. The 3ISYS-ETHF-5C, with the slim type IP 30 metal case protection, is ideal for most heavy industrial demanding environments.



Connections of Ethernet devices

## Dimension





## Specifications

3ISYS Switch Model	3ISYS-ETHF-5C
<b>Physical Ports</b>	
10/100 Base-T(X) Ports in RJ45 Auto MDI/MDIX	5
<b>Technology</b>	
Ethernet Standards	<ul style="list-style-type: none"> <li>§ IEEE 802.3 for 10Base-T</li> <li>§ IEEE 802.3u for 100Base-TX</li> <li>§ IEEE 802.3x for Flow control</li> </ul>
MAC Table	2048 MAC address
Processing	Store-and-Forward
<b>LED indicators</b>	
Power Indicator	Green : Power LED x 2
10/100Base-T(X) RJ45 Port Indicator	Green for port Link/Act. Amber for Duplex/Collision.
<b>Power</b>	
Input Power	Dual 12~48 VDC voltage power input on 4-pin terminal block
Power Consumption (Typ.)	3 Watts
Overload Current Protection	Present
Reverse Polarity Protection	Present
<b>Physical Characteristic</b>	
Enclosure	IP-30
Dimension (W x D x H)	26.1 (W) x 70 (D) x 95 (H)mm (1.03 x 2.76 x 3.74 inch)
Weight (g)	205 g
<b>Environmental</b>	
Storage Temperature	-40 to 85°C (-40 to 185°F)
Operating Temperature	-40 to 70°C (-40 to 158°F)
Operating Humidity	5% to 95% Non-condensing
<b>Regulatory approvals</b>	
EMI	FCC Part 15, CISPR (EN55022) class A
EMS	EN61000-4-2 (ESD), EN61000-4-3 (RS), EN61000-4-4 (EFT), EN61000-4-5 (Surge), EN61000-4-6 (CS), EN61000-4-8, EN61000-4-11
Shock	IEC60068-2-27
Free Fall	IEC60068-2-32
Vibration	IEC60068-2-6
Safety	EN60950-1
<b>Warranty</b>	1 year

## Ordering Information

---

3ISYS-AAAA-C

Module Identifier	Number of Copper 10/100Base-T(X) Ports
Gigabit Fast Ethernet, ETHF	5

## Items Included

---

§ 3ISYS-ETHF-5C x 1

§ Quick Installation Guide x 1

§ Din-Rail Kit x 1

§ Wall-mount Kit x 1

## Optional Accessories

---

§ 3ISYS-PWR-45 series : 45 Watts DIN-Rail power supply

§ 3ISYS-PWR-75 series : 75 Watts DIN-Rail power supply

§ 3ISYS-PWR-121000, 12VDC/1000mA 12W Power

§ 3ISYS-PWR-120 series : 120 Watts DIN-Rail power supply

§ 3ISYS-PWR-121000, 12VDC/1000mA 12W Power Adapter with universal 100 to 240VAC input, US plug



## CONTACT DETAILS

#F-2, No. 12, Alley 112  
Lane 12 Wen Hu Street Taipei, Taiwan  
Ph: +886920221793

Office 508, The Fairmont  
Shiekh Zayed Road, UAE  
Ph: +97143116732

P.O. Box 74, P.C 102 CB 49  
Al-Khuwair-233, Muscat  
Ph: +96824488412

[www.3isysnetworks.com](http://www.3isysnetworks.com)

[Click to Read More](#)

© 2012 3ISYS Networks Inc All rights reserved. This document is 3ISYS Networks Public Information

All specifications are subject to change without further notice. All features with \* mark will be available by firmware upgrade.