

# 3ISYS-ETHP-4C2F/6C

INDUSTRIAL 6-PORT LITE-MANAGED POE ETHERNET SWITCH

## FEATURES

- 3ISYS-ETHP-6C provide 4x10/100Base-T(X) P.S.E. and 2x10/100Base-T(X) ports
- 3ISYS-ETHP-4C2 FX series provide 4x10/100Base-T(X) P.S.E. and 2x100Base-FX single/multi mode fiber ports
- World's fastest Redundant Ethernet Ring: Sys-Ring (Recovery time < 10ms over 250 units of connection)
- Uni-Ring support the other vendor's ring technology in open architecture
- Sys-Chain support the multiple redundant ring technology
- Provide Fast recovery technology for Ethernet multi-redundancy
- STP/RSTP supported
- SNMP v1/v2c/v3 support for secured network management
- Support LLDP (Link Layer Discovery Protocol)
- Configurable by Web-based and Windows utility (System-Vision)
- Event notification through Syslog, Email, and SNMP trap
- Two 100Base-FX fiber port support for long distance connection
- 4 ports support P.S.E. based on IEEE 802.3af standard up to 25 Watts per port
- Rigid IP-30 housing design
- DIN-Rail and wall mounting enabled



© 2014 3ISYS NETWORKS INC ALL RIGHTS RESERVED. THIS DOCUMENT IS 3ISYS PUBLIC INFORMATION ALL SPECIFICATIONS ARE SUBJECT TO CHANGE WITHOUT FURTHER NOTICE. ALL FEATURES WITH \* MARK WILL BE AVAILABLE BY FIRMWARE UPGRADE.

## PRODUCT OVERVIEW

3ISYS-ETHP-6C/4C2F series are lite-managed redundant ring Ethernet switches with 2x10/100Base-T(X) or 2x100Base-FX fiber ports and 4x10/100Base-T(X) ports with PoE P.S.E.

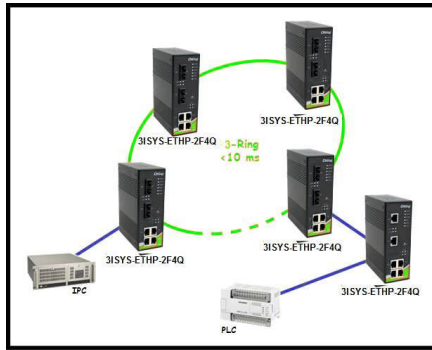
function. IPS series support Power over Ethernet, a system to transmit electrical power, along with data, to remote devices over standard twisted-pair cable in an Ethernet network. Each IPS switches has 4X10/100Base-T(X) P.S.E. (Power Sourcing Equipment) ports. P.S.E. is a device (switch or hub for instance) that will provide power in a PoE setup. With completely support of Ethernet Redundancy protocol, Sys-Ring (recovery time < 10ms over 250 units of connection), Uni-Ring, Sys-Chain and STP/RSTP (IEEE802.1w/D) technology.

3ISYS-ETHP-6C/4C2F series can be managed centralized and convenient by a powerful windows utility — System-Vision.

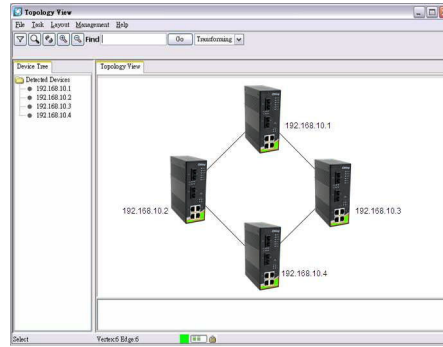
The wide operating temperature range from -40oC to 70oC can satisfy most of operating environment. Therefore, the switch is one of the most reliable choice for easy managed and Fiber Ethernet application.

## System-Vision

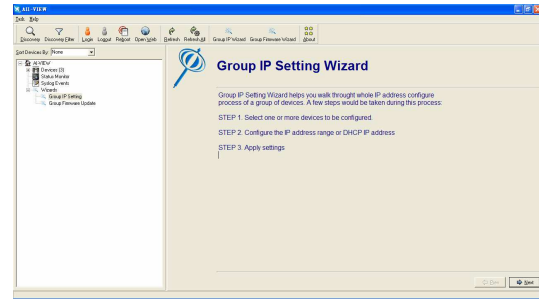
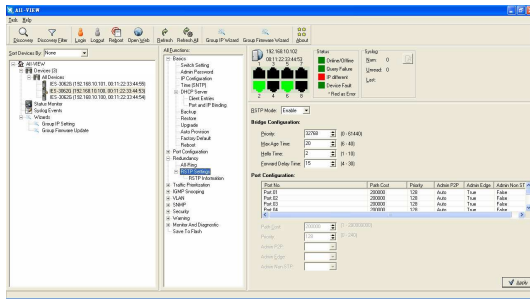
3ISYS's switches are intelligent switches. Being different from other traditional redundant switches, 3ISYS provides a set of Windows utility (System-Vision) for user to manage and monitor all of industrial Ethernet switches on the industrial network.



Network connection

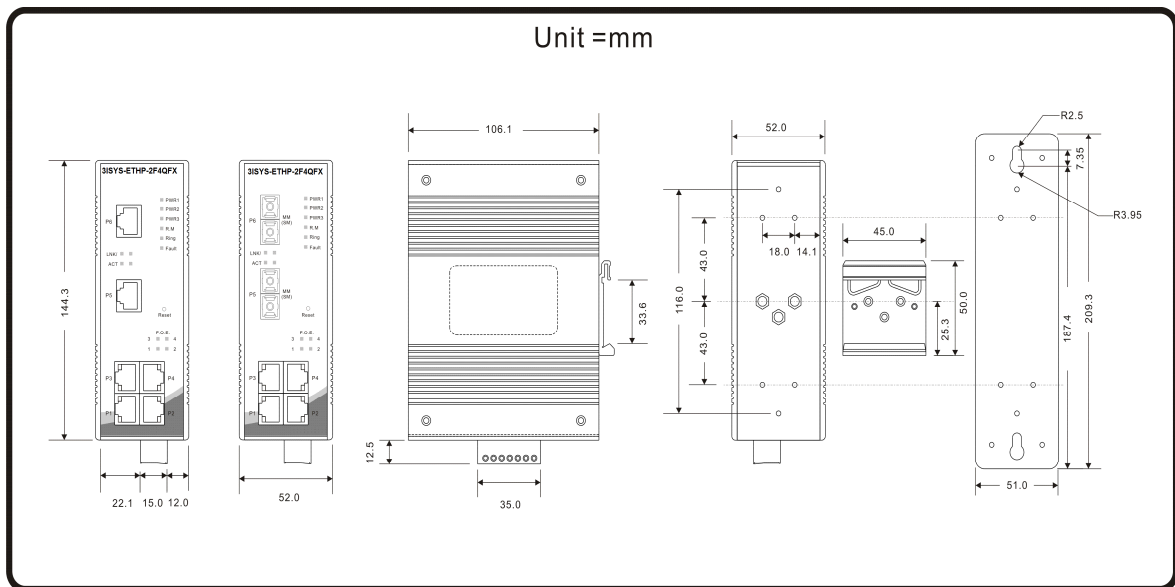


Topology View



Monitoring and Configuration

## Dimension



## PoE Pin Definition

| RJ-45 Pin Definition |                   |
|----------------------|-------------------|
| Pin No.              | Description       |
| #1                   | TD+               |
| #2                   | TD-               |
| #3                   | RD+               |
| #4                   | PoE power input + |
| #5                   | PoE power input + |
| #6                   | RD-               |
| #7                   | PoE power input - |
| #8                   | PoE power input - |

## Specifications

| 3ISYS Switch Model   |                         | 3ISYS-ETHP-6C | 3ISYS-ETHP-4C2F-M<br>M-SC | 3ISYS-ETHP-4C2F-S<br>S-SC |
|--|-------------------------|---------------|---------------------------|---------------------------|
| <b>Physical Ports</b>  |                         |               |                           |                           |
| 10/100 Base-T(X) Ports in RJ45<br>Auto MDI/MDIX with P.S.E.    |                         | <b>4</b>      | <b>4</b>                  | <b>4</b>                  |
| 10/100 Base-T(X) Ports in RJ45<br>Auto MDI/MDIX without P.S.E. |                         | <b>2</b>      |                           |                           |
| <b>Fiber Ports Specification</b>                               | Fiber Ports Number      |               | <b>2</b>                  | <b>2</b>                  |
|  | Fiber Ports Standard    |               | 100Base-FX                | 100Base-FX                |
|  | Fiber Mode              |               | Multi-mode                | Single-mode               |
|  | Fiber Diameter (µm)     |               | 62.5/125 µm<br>50/125 µm  | 9/125 µm                  |
|  | Fiber Optical Connector |               | SC                        | SC                        |
|  | Typical Distance (Km)   |               | 2 Km                      | 30 Km                     |
|  | Wavelength (nm)         |               | 1310 nm                   | 1310 nm                   |

|                    |   |  |           |         |
|--------------------|---|--|-----------|---------|
|                    | Max. Output Optical Power (dbm)   |  | -14 dbm   | -8 dbm  |
|                    | Min. Output Optical Power (dbm)   |  | -23.5 dbm | -15 dbm |
|                    | Max. Input Optical Power (Saturation)   |  | 0 dbm     | 0 dbm   |
|                    | Min. Input Optical Power (Sensitivity)  |  | -31 dbm   | -34 dbm |
|                    | Link Budget (db)  |  | 7.5 db    | 19 db   |
| <b>Technology</b>  |   |  |           |         |
| Ethernet Standards | <ul style="list-style-type: none"> <li>§ IEEE 802.3 for 10Base-T</li> <li>§ IEEE 802.3u for 100Base-TX and 100Base-FX</li> <li>§ IEEE 802.3x for Flow control</li> <li>§ IEEE 802.1D for STP (Spanning Tree Protocol)</li> <li>§ IEEE 802.1w for RSTP (Rapid Spanning Tree Protocol)</li> <li>§ IEEE 802.1AB for LLDP (Link Layer Discovery Protocol)</li> <li>§ IEEE 802.3af PoE specification (up to 25 Watts per port for P.S.E.)</li> </ul> |  |           |         |
| MAC Table          | 1024 MAC addresses  |  |           |         |
| Priority Queues    | 4   |  |           |         |
| Processing         | Store-and-Forward   |  |           |         |
| Switch Properties  | Switching bandwidth: 1.2Gbps<br>VLAN: Port Based  |  |           |         |
| Security Features  | Enable/disable ports<br>VLAN to segregate and secure network traffic  |  |           |         |
| Software Features  | <ul style="list-style-type: none"> <li>§ STP/RSTP (IEEE 802.1D/w)</li> <li>§ Redundant Ring (Sys-Ring) with recovery time less than 10ms over 250 units</li> <li>§ Uni-Ring support the other vendor's ring technology in open architecture</li> <li>§ Port configuration, status, statistics, monitoring, security</li> <li>§ DHCP Client</li> </ul>   |  |           |         |
| Network Redundancy | <ul style="list-style-type: none"> <li>§ Sys-Ring</li> <li>§ Uni-Ring</li> <li>§ Sys-Chain</li> <li>§ Fast recovery</li> <li>§ STP</li> <li>§ RSTP</li> </ul>   |  |           |         |

| <b>LED indicators</b>               |  |               |         |
|-------------------------------------|--|---------------|---------|
| Power/PoE Indicator                 | Green : Power LED x 3. Green : PoE LED x 4   |               |         |
| R.M. Indicator                      | Green : Indicate system operated in Sys-Ring Master mode   |               |         |
| Sys-Ring Indicator                  | Green : Indicate system operated in Sys-Ring mode  |               |         |
| Fault Indicator                     | Amber : Indicate unexpected event occurred   |               |         |
| 10/100Base-T(X) RJ45 Port Indicator | Green for port Link/Act. Amber for Link  |               |         |
| Fiber Port Indicator                | Green for port Link/Act. Amber for Link  |               |         |
| <b>Fault contact</b>                |  |               |         |
| Relay                               | Relay output to carry capacity of 1A at 24VDC  |               |         |
| <b>Power</b>                        |  |               |         |
| Redundant Input Power               | Triple DC inputs. 2x48VDC on 7-pin terminal block, 1x48VDC on power jack   |               |         |
| Power Consumption (Typ.)            | 5 Watts  | 7 Watts       | 7 Watts |
| Overload Protection Current         | Present  |               |         |
| Reverse Polarity Protection         | Present on terminal block  |               |         |
| <b>Physical Characteristic</b>      |  |               |         |
| Enclosure                           | IP-30  |               |         |
| Dimension (W x D x H)               | 52(W) x 106.1(D) x 144.3(H) mm (2.05x4.18x5.68 inch.)  |               |         |
| Weight (g)                          | 696 g  | 709 g         | 709 g   |
| <b>Environmental</b>                |  |               |         |
| Storage Temperature                 | -40 to 85°C (-40 to 185°F)   |               |         |
| Operating Temperature               | -40 to 70°C (-40 to 158°F)   |               |         |
| Operating Humidity                  | 5% to 95% Non-condensing   |               |         |
| <b>Regulatory approvals</b>         |  |               |         |
| EMI                                 | FCC Part 15, CISPR (EN55022) class A   |               |         |
| EMS                                 | EN61000-4-2 (ESD), EN61000-4-3 (RS), EN61000-4-4 (EFT), EN61000-4-5 (Surge), EN61000-4-6 (CS), EN61000-4-8, EN61000-4-11 |               |         |
| Shock                               | IEC60068-2-27  |               |         |
| Free Fall                           | IEC60068-2-32  |               |         |
| Vibration                           | IEC60068-2-6   |               |         |
| Safety                              | EN60950-1  |               |         |
| <b>MTBF</b>                         | 304,333 hours  | 292,673 hours |         |
| <b>Warranty</b>                     | 1 year   |               |         |

## Ordering Information

3ISYS®-AAAA-C

| Module Identifier     | Number of 10/100Base-TX P.S.E Ports |
|-----------------------|-------------------------------------|
| Fast P.O.E Lite, ETHP | 6                                   |

3ISYS-AAAA-C-F

| Module Identifier     | Number of 10/100Base-TX P.S.E Ports | Number of Fiber Ports |
|-----------------------|-------------------------------------|-----------------------|
| Fast P.O.E Lite, ETHP | 4                                   | 2                     |

## Items Included

|   |                                      |   |                           |   |                                     |
|---|--------------------------------------|---|---------------------------|---|-------------------------------------|
| 1 | <b>3ISYS-ETHP-6C/4C2F series x 1</b> | 1 | <b>3ISYS Tool CD x 1</b>  | 1 | <b>Quick Installation Guide x 1</b> |
|   |                                      | 1 | <b>Wall-mount Kit x 1</b> |   |                                     |

## Optional Accessories

|   |  |   |   |
|---|--|---|---|
| 1 | <b>System-Vision M5C : Powerful Network Management Windows Utility Suit, 500 IP devices</b>          | 1 | <b>3ISYS-PWR-75-48 : 75 Watts DIN-Rail power supply</b>                     |
| 1 | <b>3ISYS-PWR-482500, 48VDC/2500mA 120W Power Adapter with universal 100 to 240VAC input, US plug</b> | 1 | <b>3ISYS-PWR-120-48 : 120 Watts DIN-Rail power supply</b>                   |
|   |  | 1 | <b>3ISYS-PWR-482500, 48VDC/2500mA 120W Power Adapter with universal 100</b> |



## CONTACT DETAILS

#F-2, No. 12, Alley 112  
Lane 12 Wen Hu Street Taipei, Taiwan  
Ph: +886920221793

Office 508, The Fairmont  
Shiekh Zayed Road, UAE  
Ph: +97143116732

P.O. Box 74, P.C 102 CB 49  
Al-Khuwair-233, Muscat  
Ph: +96824488412

[www.3isysnetworks.com](http://www.3isysnetworks.com)

[Click to Read More](#)

© 2012 3ISYS Networks Inc All rights reserved. This document is 3ISYS Networks Public Information

All specifications are subject to change without further notice. All features with \* mark will be available by firmware upgrade.