

3ISYS-ETHI-8C4F

**INDUSTRIAL 12-PORT RACK MOUNT MANAGED GIGABIT POE ETHERNET SWITCH
WITH 4X1000BASE-X, SFP SOCKET**

FEATURES

- Supports Sys-Ring (recovery time < 30ms over 250 units of connection), MSTP/RSTP/STP (IEEE 802.1s/w/D) for Ethernet Redundancy
- Support Jumbo frame up to 9.6K Bytes
- Supports IPV6 new internet protocol version
- Provided HTTPS/SSH protocol to enhance network security
- Supports SMTP client
- Supports IP-based bandwidth management
- Supports application-based QoS management
- Supports Device Binding security function
- Supports DOS/DDOS auto prevention
- Supports IEEE 802.3at compliant PoE and total power budget is 120Watts with maximum 30Watts per port
- Supports PoE scheduled configuration and PoE auto-ping check function
- 300Watts Power supply included
- IGMP v2/v3 (IGMP snooping support) for filtering multicast traffic
- Supports SNMP v1/v2c/v3 & RMON & 802.1Q VLAN Network Management
- Support ACL, 802.1x User Authentication for security
- Multiple notification for warning of unexpected event
- Windows utility (System-Vision 3.0) support centralized management and configurable by Web-based interface, Telnet and Console (CLI)
- Support LLDP Protocol
- 19 inches rack mountable design



© 2014 3ISYS NETWORKS INC ALL RIGHTS RESERVED. THIS DOCUMENT IS 3ISYS PUBLIC INFORMATION ALL SPECIFICATIONS ARE SUBJECT TO CHANGE WITHOUT FURTHER NOTICE. ALL FEATURES WITH * MARK WILL BE AVAILABLE BY FIRMWARE UPGRADE.

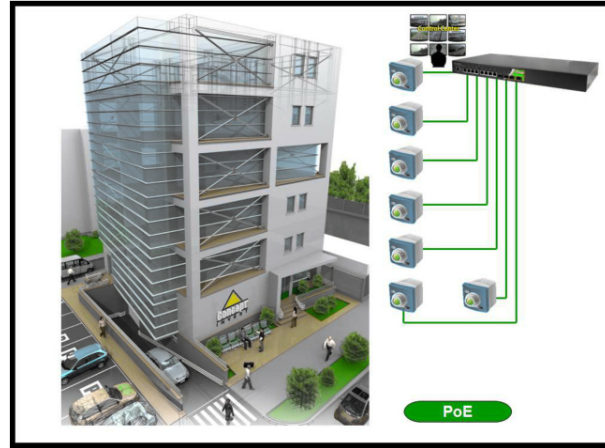
PRODUCT OVERVIEW

3ISYS-ETHI-8C4F is managed redundant ring PoE Ethernet switches with 4x1000Base-X SFP ports and 8x10/100/1000Base-T(X) P.S.E. ports.

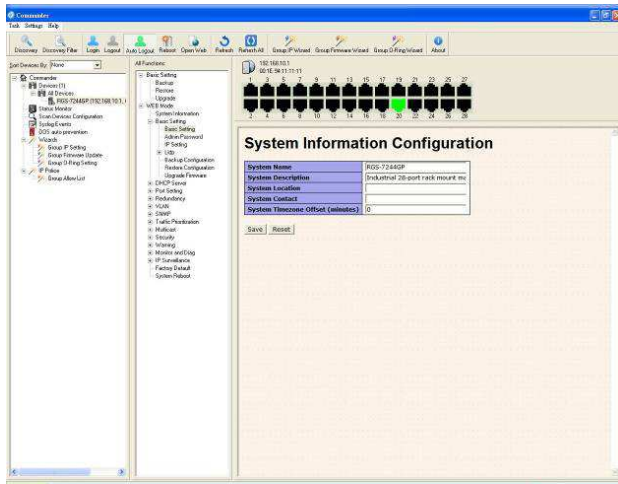
3ISYS-ETHI-8C4F provided advanced IP-based bandwidth management which can limit each IP device maximum bandwidth. User can configure IP camera and NVR with more bandwidth and limit the bandwidth of other device.

3ISYS-ETHI-8C4F also supports application-based QoS which can set highest priority for data stream according TCP/UDP port number. 3ISYS-ETHI-8C4F also provided advanced DOS/DDOS auto prevention. If there is any IP flow become big in short time, 3ISYS-ETHI-8C4F will lock the source IP address for certain time to prevent the attack. It's hardware-based prevention so it can prevent plenty of DOS/DDOS attacks immediately and completely.

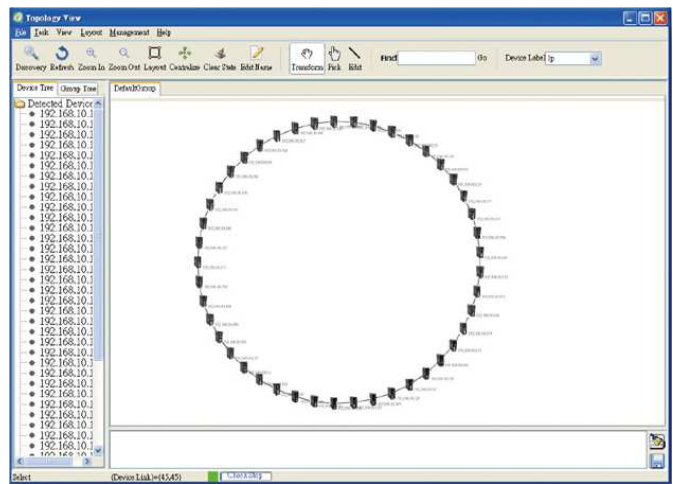
3ISYS-ETHI-8C4F also support Power over Ethernet, a system to transmit electrical power up to 30 watts, along with data, to remote devices over standard twisted-pair cable in an Ethernet network. Each 3ISYS-ETHI-8C4F switch has 8x10/100/1000Base-T(X) P.S.E. (Power Sourcing Equipment) ports. P.S.E. is a device (switch or hub for instance) that will provide power in a PoE connection. All function of 3ISYS-ETHI-8C4F can be managed centralized and Web-based, Telnet, Console (CLI). Therefore, the switch is one of the most reliable choice for highly-managed and Gigabit Fiber Ethernet and PoE application.



Fiber Network connection

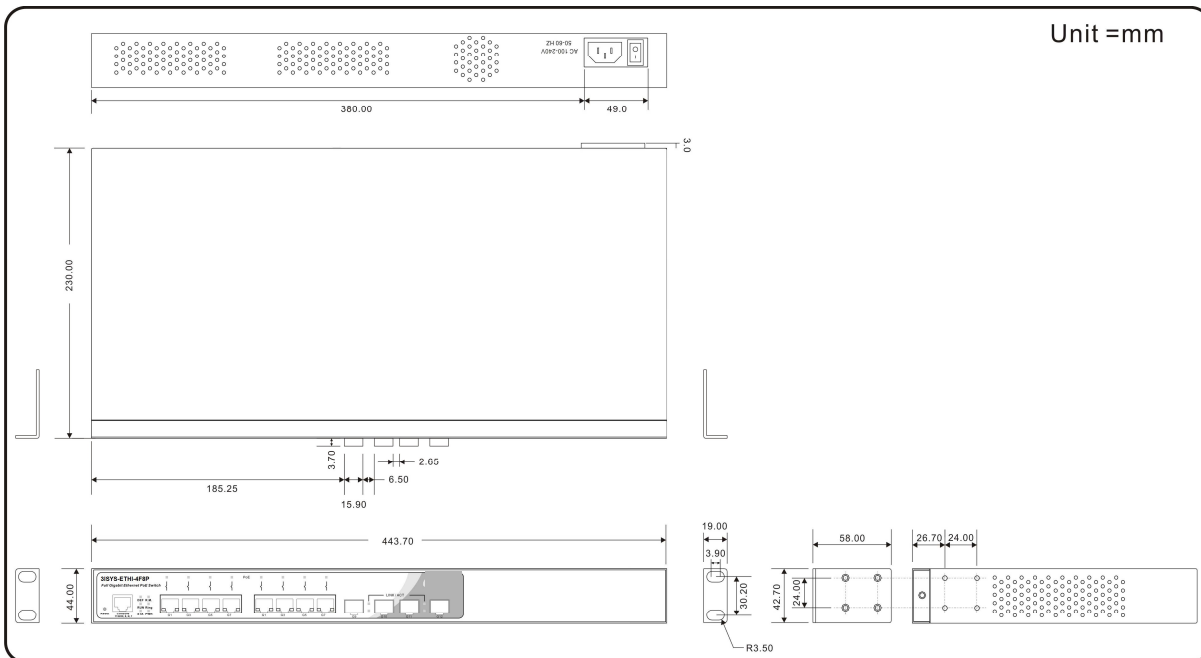


Monitoring and Configuration interface



Topology View

Dimension



PoE Pin Definition

1 10/100Base-T(X) P.S.E. RJ-45 port

RJ-45 Pin Definition	
Pin No.	Description
#1	TD+ with PoE Power input +
#2	TD- with PoE Power input +
#3	RD+ with PoE Power input -
#6	RD- with PoE Power input -

1 1000Base-T P.S.E. RJ-45 port

RJ-45 Pin Definition	
Pin No.	Description
#1	BI_DA+ with PoE Power input +
#2	BI_DA- with PoE Power input +
#3	BI_DB+ with PoE Power input -
#4	BI_DC+
#5	BI_DC-
#6	BI_DB- with PoE Power input -
#7	BI_DD+
#8	BI_DD-

Specifications

3ISYS Switch Model	3ISYS-ETHI-8C4F
Physical Ports	
1000Base-X SFP Port	4
10/100/1000 Base-T(X) Ports in RJ45 Auto MDI/MDIX with P.S.E	8, 120Watts with maximum 30Watts per port
Technology	
Ethernet Standards	<ul style="list-style-type: none"> • IEEE 802.3 for 10BaseT • IEEE 802.3u for 100Base-TX • IEEE 802.3z for 1000Base-X • IEEE 802.3ab for 1000Base-T • IEEE 802.3x for Flow control • IEEE 802.3ad for LACP (Link Aggregation Control Protocol) • IEEE 802.1D for STP (Spanning Tree Protocol) • IEEE 802.1p for COS (Class of Service) • IEEE 802.1Q for VLAN Tagging

	<ul style="list-style-type: none"> •IEEE 802.1w for RSTP (Rapid Spanning Tree Protocol) •IEEE 802.1x for Authentication •IEEE 802.3at PoE specification (up to 30 Watts per port for P.S.E.)
MAC Table	8192 MAC addresses
Priority Queues	4
Processing	Store-and-Forward
Switch Properties	<ul style="list-style-type: none"> •Switching latency: 7 us •Switching bandwidth: 24Gbps •Max. Number of Available VLANs: 256 •IGMP multicast groups: 128 for each VLAN •Port rate limiting: User Define
Security Features	<ul style="list-style-type: none"> •Device Binding security feature •Enable/disable ports, MAC based port security •Port based network access control (802.1x) •VLAN (802.1Q) to segregate and secure network traffic •Radius centralized password management •SNMPv3 encrypted authentication and access security •Https / SSH enhance network security
Jumbo frame	Up to 9.6K Bytes
Software Features	<ul style="list-style-type: none"> •STP/RSTP/MSTP (IEEE 802.1D/w/s) •Redundant Ring (Sys-Ring) with recovery time less than 30ms over 250 units •TOS/Diffserv supported •Quality of Service (802.1p) for real-time traffic •VLAN (802.1Q) with VLAN tagging and GVRP supported •IGMP Snooping •IP-based bandwidth management •Application-based QoS management •DOS/DDOS auto prevention •Port configuration, status, statistics, monitoring, security •DHCP Client/Server •SMTP Client
Network Redundancy	<p>Sys-Ring</p> <p>Fast Recovery Mode</p> <p>STP / RSTP</p> <p>MSTP</p>
RS-232 Serial Console Port	RS-232 in RJ45 connector with console cable. 115200bps, 8, N, 1
LED indicators	
Power indicator (PWR)	Green : Power indicator
System Ready Indicator (STA)	Green: Indicate system ready. Blinking for system is upgrading firmware.
Ring Master Indicator (R.M.)	Green : Indicate system operated in Sys-Ring Master mode
Sys-Ring Indicator (Ring)	Green: Indicate system operated in Sys-Ring mode. Blinking to indicate Ring is broken.
System Running Indicator	Green : System operated continuously

(RUN)	
Reset To Default Running Indicator (DEF)	Green : System reset to default configuration
PoE indicator	Blue : PoE LED x 8
10/100/1000Base-T(X) RJ45 port indicator	Green for port Link/Act. Amber for Duplex/Collision
1000Base-X SFP port indicator	Green for port Link/Act.
Power	
Power Input	AC 100~240V/AC, 50~60Hz
PoE Output Power	120Watts max for -40 to 60°C / Power de-rating 12W/ °C for 60 to 70°C
Power Consumption (Type.)	22Watts (power device not included)
Overload current protection	Present
Physical Characteristic	
Enclosure	19 inches rack mountable
Dimension (W x D x H)	443.7(W)x230(D)x44(H) mm
Weight (g)	3,554 g
Environmental	
Storage Temperature	-40 to 85°C (-40 to 185°F)
Operating Temperature	-40 to 70°C (-40 to 158°F)
Operating Humidity	5% to 95% Non-condensing
Regulatory approvals	
EMI	FCC Part 15, CISPR (EN55022) class A
EMS	<ul style="list-style-type: none"> • EN61000-4-2 (ESD) • EN61000-4-3 (RS), • EN61000-4-4 (EFT), • EN61000-4-5 (Surge), • EN61000-4-6 (CS), • EN61000-4-8, • EN61000-4-11
Shock	IEC60068-2-27
Free Fall	IEC60068-2-32
Vibration	IEC60068-2-6
Warranty	1 year

Ordering Information

3ISYS®-AAAA-C-F

Module Identifier	Number of 10/100/1000 Base-T(X) Ports	Number of 1000Base-X SFP Port
Industrial POE, ETHI	8	4

Packing List

1	3ISYS-ETHI-8C4F x 1	1	3ISYS Tool CD x 1	1	Quick Installation Guide x 1
1	Rack-mount Kit x 1	1	Console Cable x 1		

Optional Accessories

1	System-Vision M5C : Powerful Network Management Windows Utility Suit, 500 IP devices	1	3ISYS-FTX : 1Gbps SFP optical transceiver
---	--------------------------------------------------------------------------------------	---	-------------------------------------------



CONTACT DETAILS

#F-2, No. 12, Alley 112
Lane 12 Wen Hu Street Taipei, Taiwan
Ph: +886920221793

Office 508, The Fairmont
Shiekh Zayed Road, UAE
Ph: +97143116732

P.O. Box 74, P.C 102 CB 49
Al-Khuwair-233, Muscat
Ph: +96824488412

www.3isysnetworks.com

[Click to Read More](#)

© 2012 3ISYS Networks Inc All rights reserved. This document is 3ISYS Networks Public Information

All specifications are subject to change without further notice. All features with * mark will be available by firmware upgrade.